

Greystone Shoppes

Highway 5 & Greystone Country Club



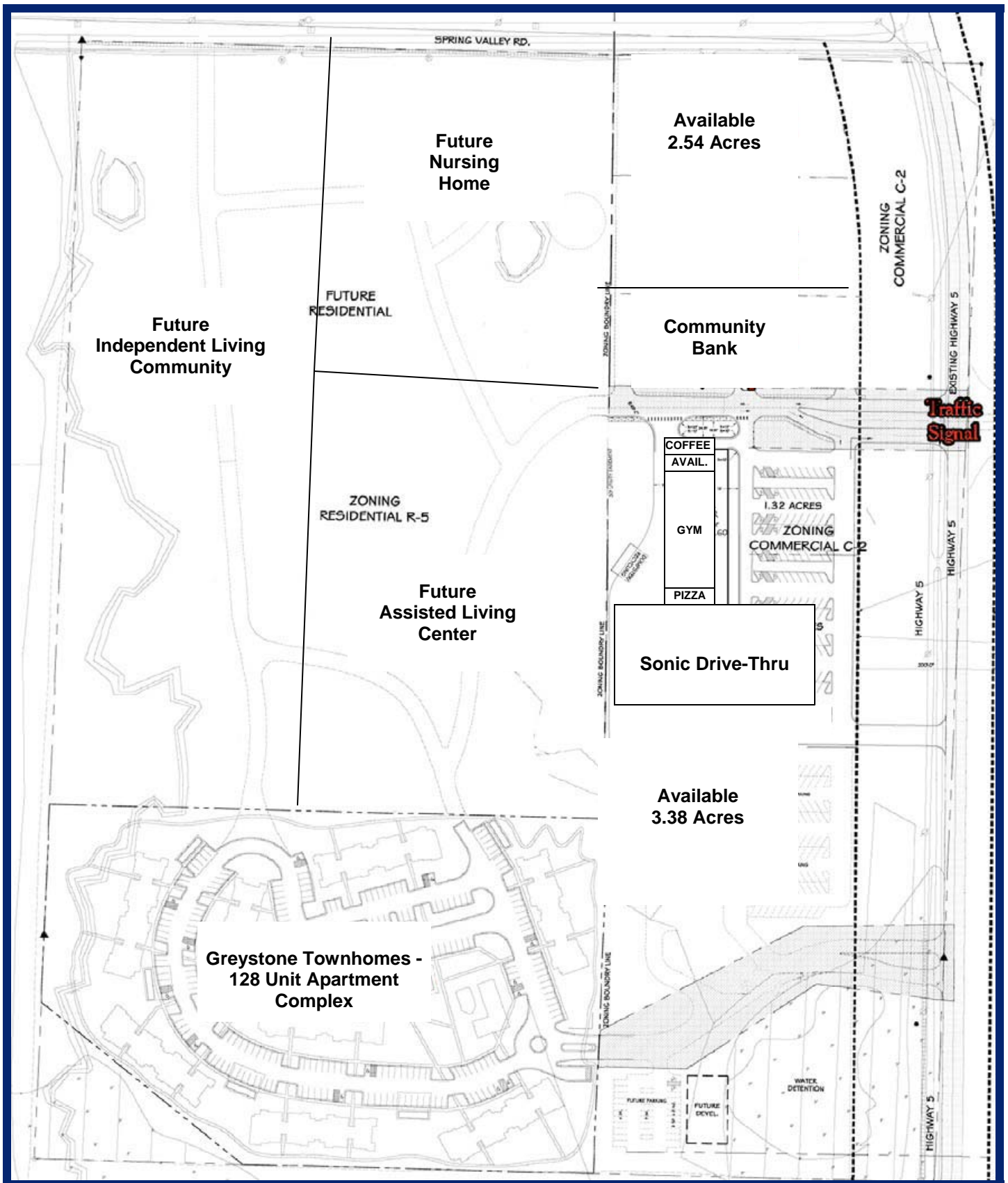
- 1,950sf remaining in the 12,000sf retail development
- \$14.50 per square foot (NNN)
- \$14.50psf Tenant Finish Allowance
- Across from Greystone Country Club; less than 4 miles south of Magness Creek subdivision
- Adjacent to:
 - 128 unit multi-family development
 - Future Nursing Home
 - Future Assisted Living Center

- Great Highway 5 visibility, Cabot City Limits
- Outparcels for Sale:
Additional 2.54 & 3.38 acres available - call for pricing
- Home to Stompin' Grounds Coffee Co., Larry's Pizza, Sonic & Community Bank

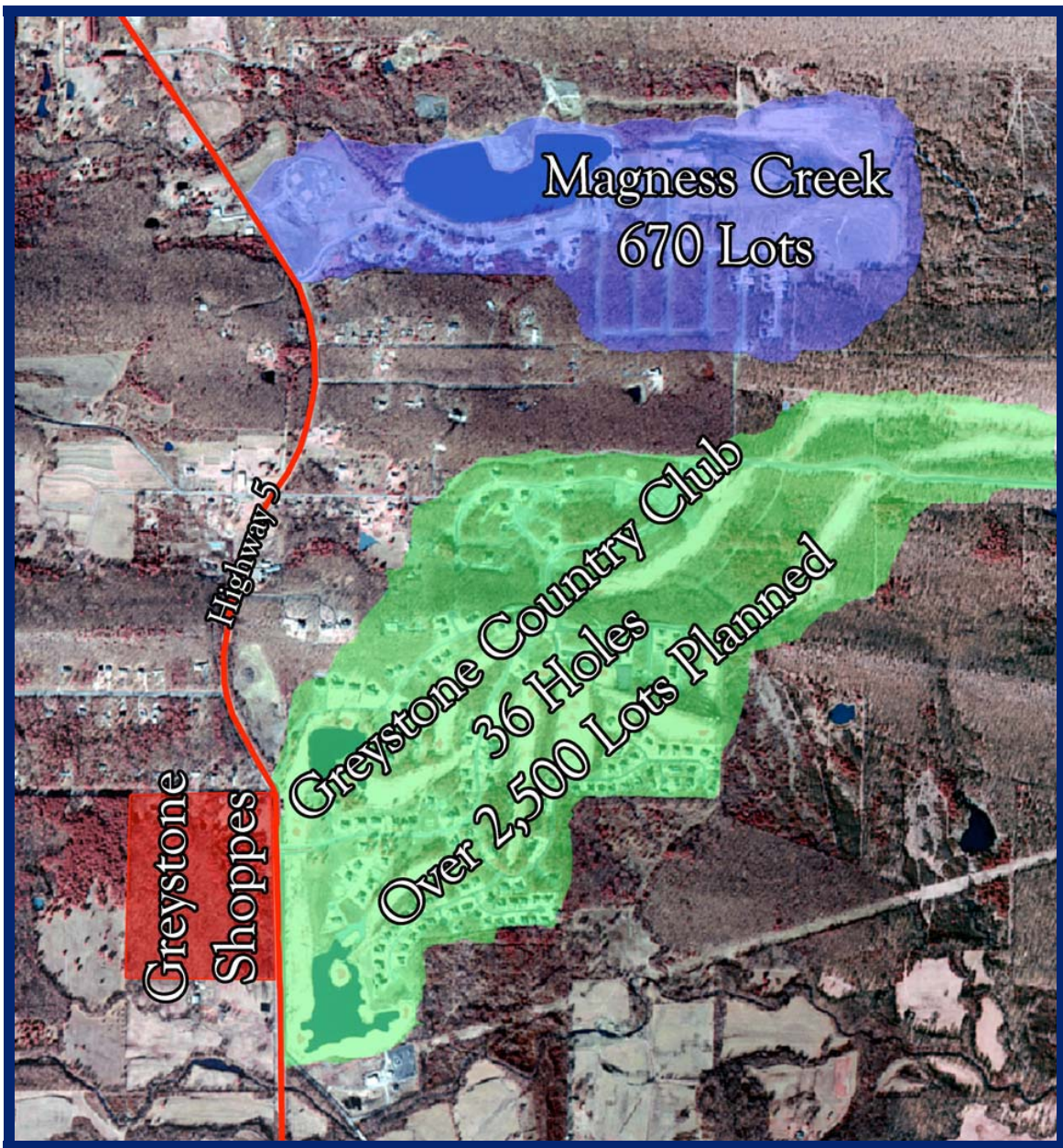


For Information Contact:

Adrian Holman
501.954.9702



2006 Traffic Count (Highway 5) – 15,435 cars per day



Key Demographics

	1 Mile	3 Miles	5 Miles
2007 Population	1,266	7,281	25,317
Growth 1990-2000	80.57%	85.76%	57.33%
Households – 2007 Estimate	441	2,528	9,268
Households – 2012 Projection	529	3,026	11,020
2007 Est. Average Household Income	\$76,556	\$77,494	\$62,654
2007 Est. Median Household Income	\$67,521	\$68,335	\$55,654

Source: Claritas, January 2008